

Welcome to the EAQConnect Test System.

If you want to participate in the EAQConnect testing method you have to download and install our EAQC-Browser.

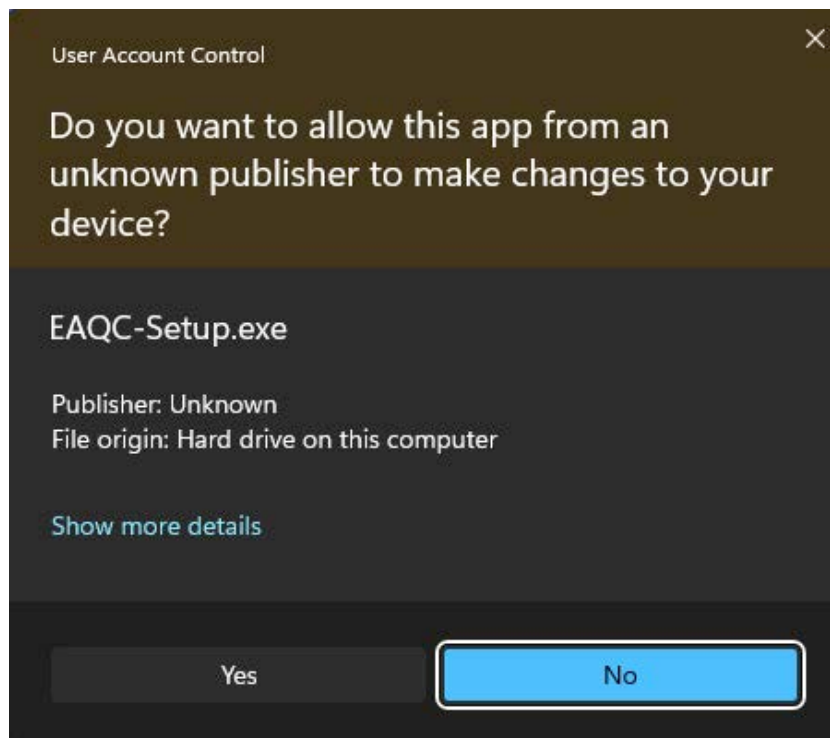
Requierments: Windows 10 (Build: 10240) or newer.

Installation:

The download package contains one file. To make sure all necessary updates get installed please open the "EAQC-Setup" the installation programm will take care of the missing applications and install them. If you are ask to grant the installation administrator rights, please press "Yes".

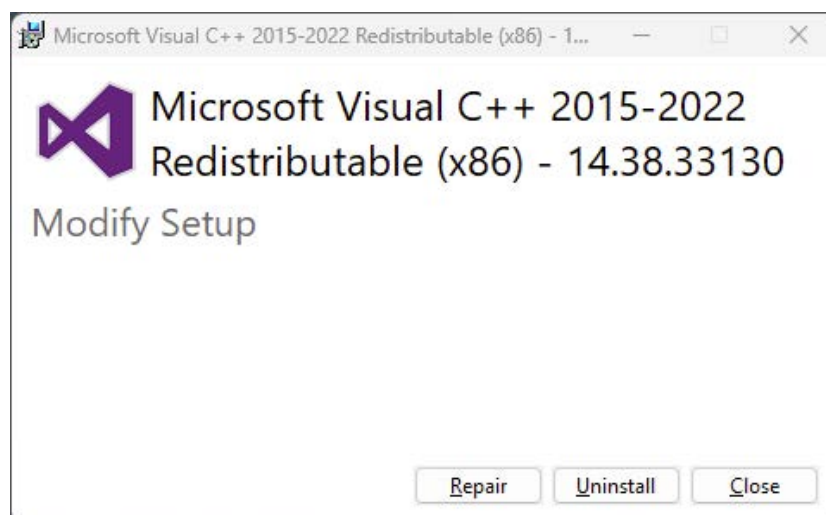
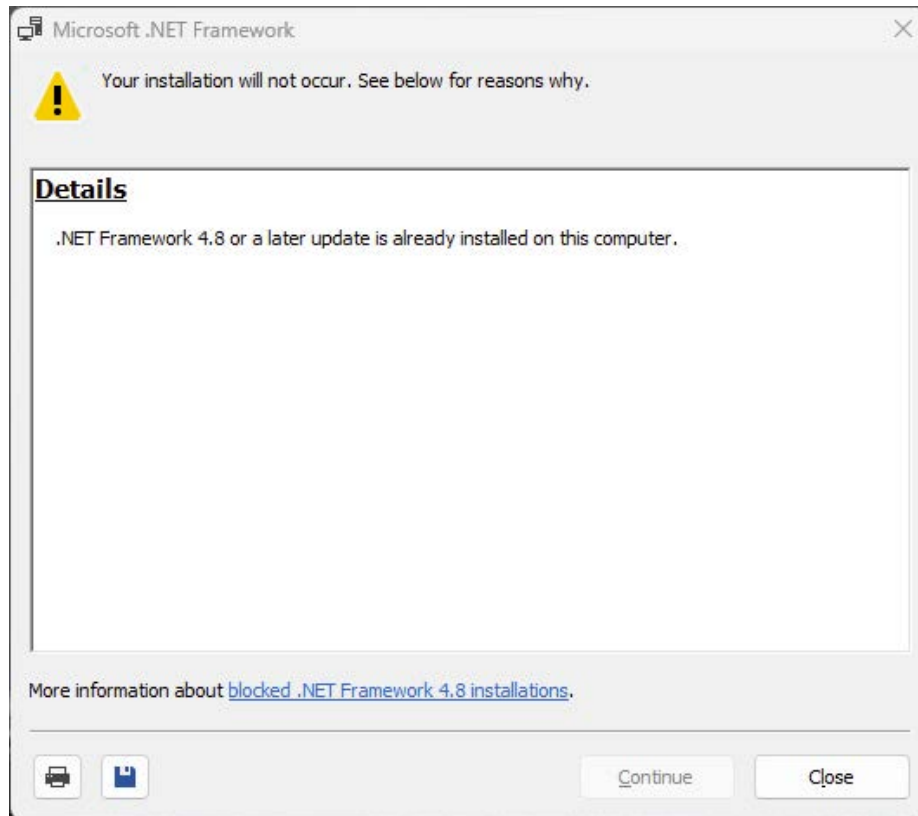


Windows will probably give a warning. Just confirm it, by chosing "Yes" or "Ja", depending on your language settings.



The setup wizard will now guide you through the installation process.

During the installation process, two other packages will be installed. ".NET Framework 4.8" & "Microsoft Visual C++ 2015-2022 Redistributable (x86) - 14.38.33130". If they're already installed on your system, following warnings will appear.



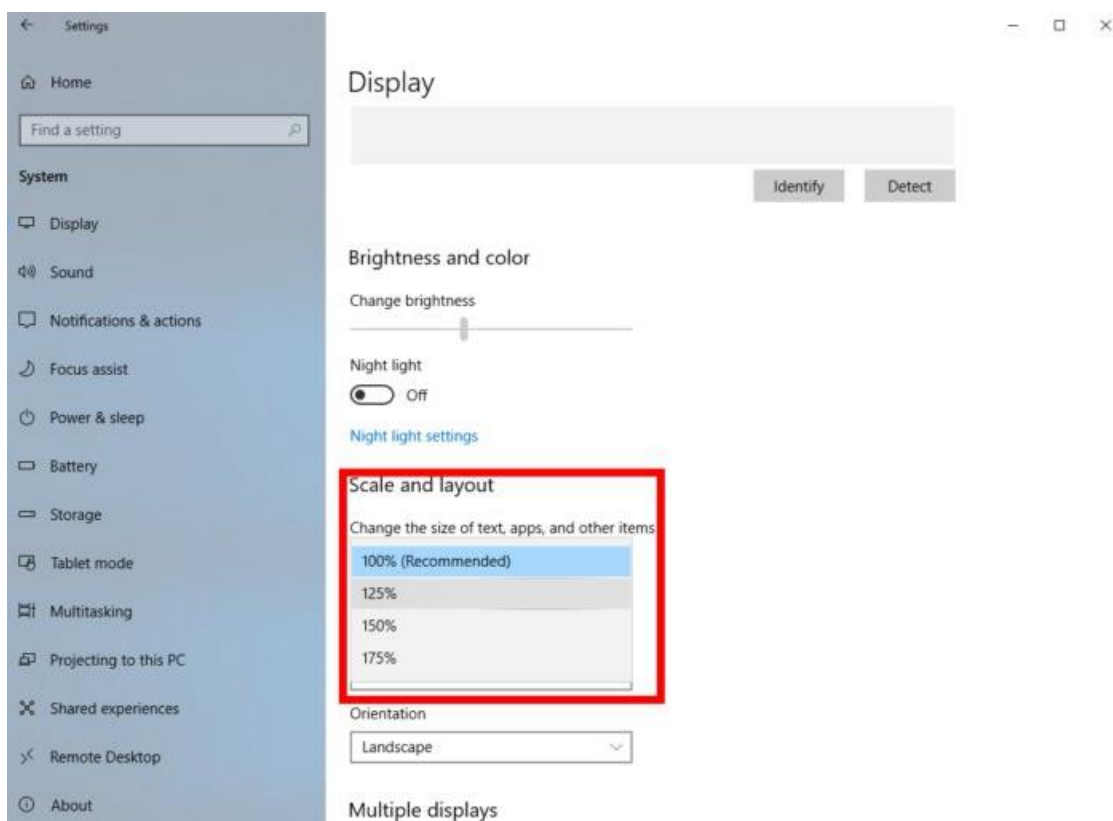
Those can be dismissed, by clicking "Close" or "Schließen", depending on your language settings.

Running the program:

After the installation is finished you will find a desktop shortcut for the EAQC-Browser. The execution of the program requires you to have administrator rights. Make sure you are logged in as an administrator or you can run it as one.



Note: Before you start the EAQC Browser please deactivate the Windows Scaling. You can find this option the display settings. Please change the scale and layout to 100%. This prevents unfavorable zooming in the program.



After executing the EAQC-Browser the system may take a while to start it. To make sure the program runs properly please disable your antivirus software for the time of the test.

Inside the program you first have to compare the settings of your computer, with the settings mandatory for the EAQC-Browser to work properly. A window with several settings to check will appear. Once ticked with a green mark on the right of the respective setting, the adjustment is correct. To continue, please click on "OK!".

Make sure the grey Browser area is fully visible. Its border is marked black.
Your Screen should at least have a resolution of 1440 x 900.

DPI	100	✓
Resolution	1440 x 900	✓
Windows Version	Windows 10 Enterprise	✓
Windows Build Number	22621.2283	✓
.NET Version	4.8 or later	✓

If you have problems please contact us: +49 40 484 04 90

Now place the browser area in a way that it is fully visible. However, it doesn't have to be in the middle of the screen. Make sure the black border is visible.

There are 4 buttons.

When you just want to try out the EAQC Browser and do the provided sample tests run the "Sample Mode".

When your test coordinator wants you to start the assessment, press "Start Assessment". This starts a secure environment for the assessment.

If you are having trouble with the test, for example after you press continue you get a white page, press "Reload Page".

"Exit" will leave the application.

Once you're set, you will be asked to fill out the "Data privacy declaration". Please enter your name and the Airline your work for at the moment on the top.

Data privacy declaration

Name: Airline:

And accept the declaration at the bottom of the display.

☐ I accept the data privacy declaration